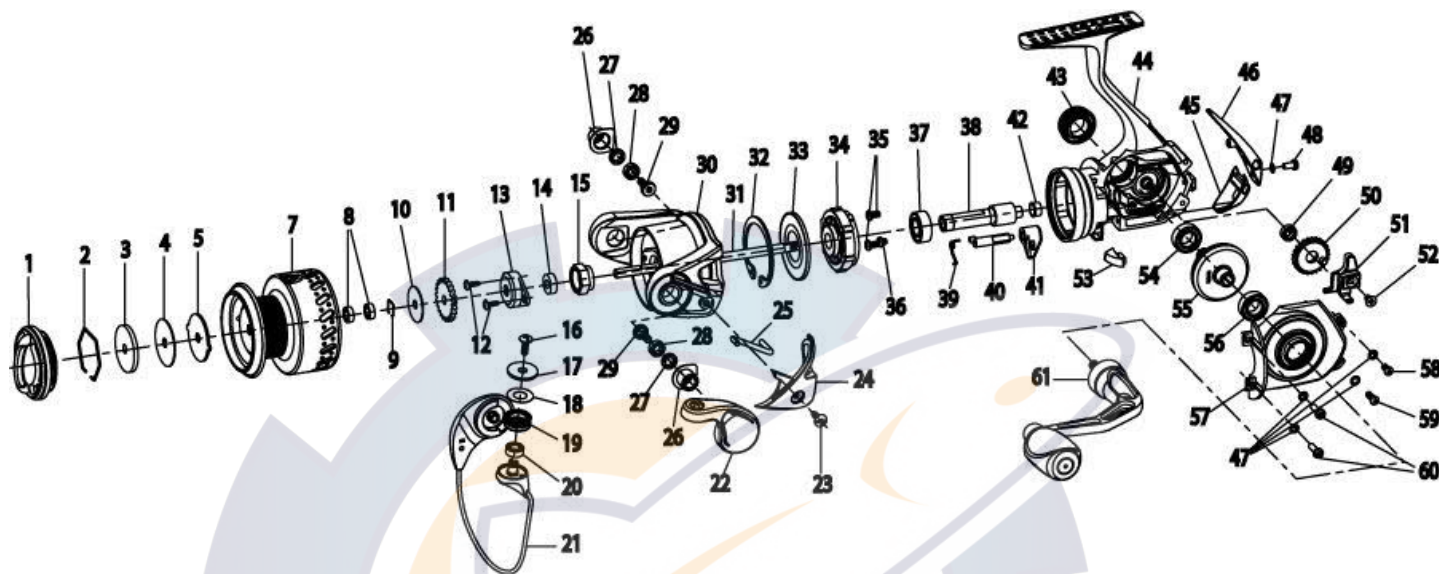


QUANTUM®

Tour Edition

TE10PTiAS



TOUR EDITON SPINNING REEL Part List

Key #	Description	Part No.		Key #	Description	Part No.	
		TE10				TE10	
1	Drag Knob Assembly	RK332-11		32	Clutch Retaining Ring	RK060-01	
2	Retainer Ring	RQ038-01		33	Clutch Seal Plate	RK166-01	
3	Drag Washer "D"	SQ080-01		34	Clutch Unit	AG463-01	
4	Drag Washer "B"	RQ033-01		35	Pinion Bearing Screw "A"	TK057-21	
5	Drag Washer "A"	RQ081-01		36	Pinion Bearing Screw "B"	TK057-21	
6	Drag Washer "C"	N/A		37	Pinion Ball Bearing	CH028-01	
7	Spool Assembly	RK321-11		38	Pinion	PQ011-01	
8	Spool Ball Bearing	EH158-01		39	Stopper Cam Spring	RK089-01	
9	Bearing Retainer Ring	TK034-01		40	Stopper Cam	RK090-01	
10	Spool Adjust Washer	PT030-01		41	Stopper Lever	RQ059-01	
11	Click Gear	RQ037-01		42	Pinion Bushing	PQ141-03	
12	Rotor Nut Lock Screw	RK094-01		43	Handle Screw Assembly	BG354-02	
13	Rotor Nut Cover	RK214-01		44	Body Assembly	RK301-11	
14	Main Shaft Bushing	SK213-01		45	Body Rear Cover "Bottom"	RK140-55	
15	Rotor Nut	SK006-01		46	Body Rear Cover "Top"	RK140-03	
16	Line Roller Screw	AQ108-01		47	Side Cover Screw Washer	RQ142-01	
17	Line Roller Collar	AG104-01		48	Side Cover Screw "D"	RQ057-11	
18	Line Roller Washer	PQ102-01		49	O/S Gear Ball Bearing	EH158-01	
19	Line Roller	PQ004-01		50	O/S Gear	PQ053-01	
20	Line Roller Balling Bearing	GH202-01		51	O/S Slider	PQ025-01	
21	Bail Assembly	AG347-01		52	Main Shaft Screw	RQ100-01	
22	Arm Lever Assembly	AG307-01		53	Trip Ramp	RK119-01	
23	A/L Cover Screw	GU077-01		54	Body Ball Bearing	CH027-01	
24	Armler Cover	RK087-04		55	Drive Gear Assembly	PT312-01	
25	Kick Lever	RK019-01		56	Side Cover Ball Bearing	CH028-01	
26	Bail Pivot Insert	TK112-01		57	Side Cover Assembly	RK323-11	
27	Bail Pivot Bushing	TK109-01		58	Side Cover Screw "C"	SK057-11	
28	Bail Pivot Ball Bearing	EH158-01		59	Side Cover Screw "B"	N/A	
29	Bail Pivot Screw	TK111-01		60	Side Cover Screw "A"	RQ057-04	
30	Rotor Assembly	RK309-11		61	Handle Assembly	AG318-01	
31	Main Shaft	PQ015-02					